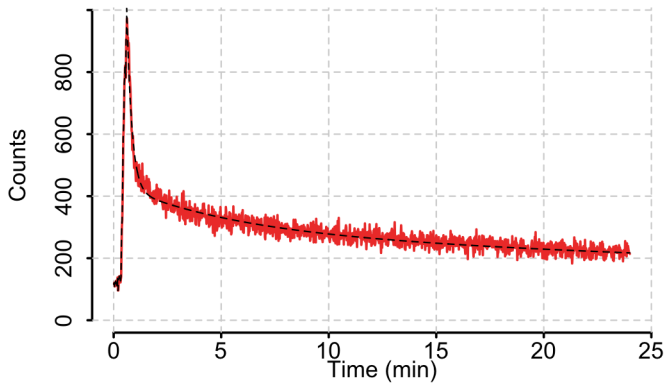
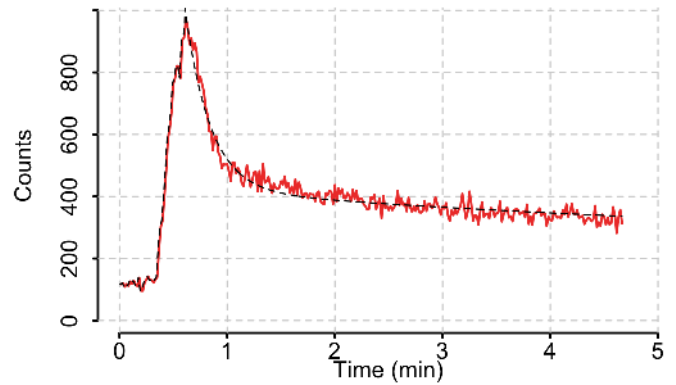


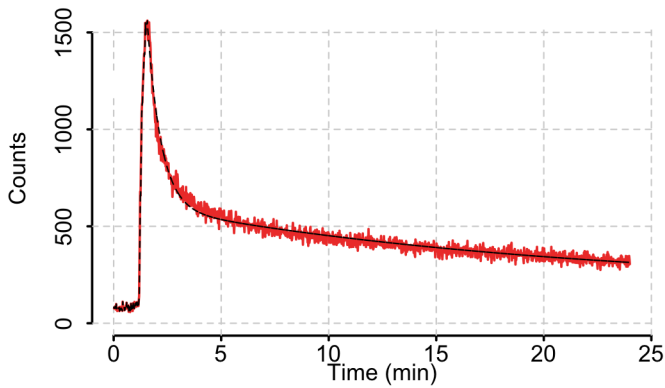
twilitetwo - arterial input function examples



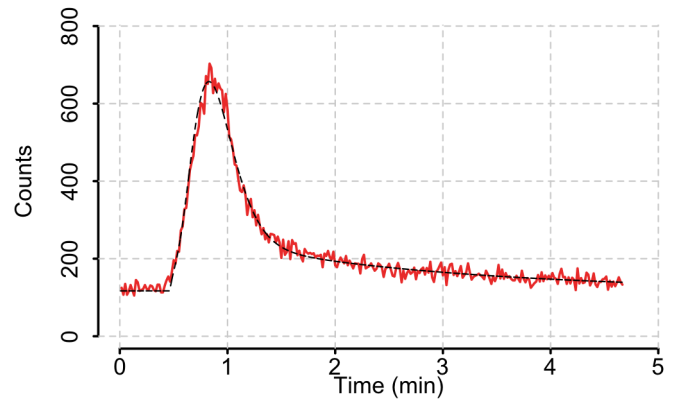
$[^{18}\text{F}]$ -fluorodeoxyglucose (FDG) in mouse
18 MBq via femoral arteriovenous shunt
data shown with 3-exponential model fit



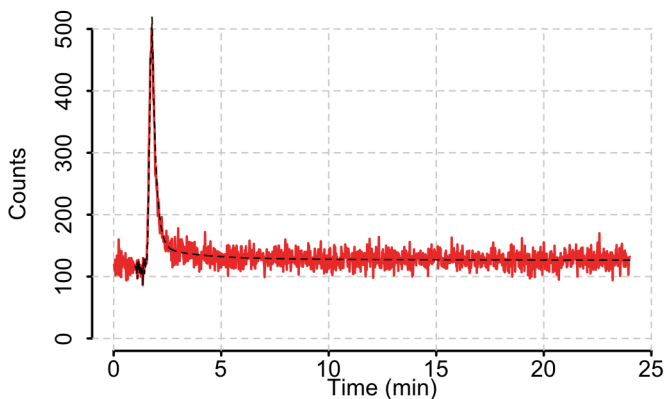
$[^{18}\text{F}]$ -fluorodeoxyglucose (FDG) in mouse
(zoom on peak area of data shown to the left)



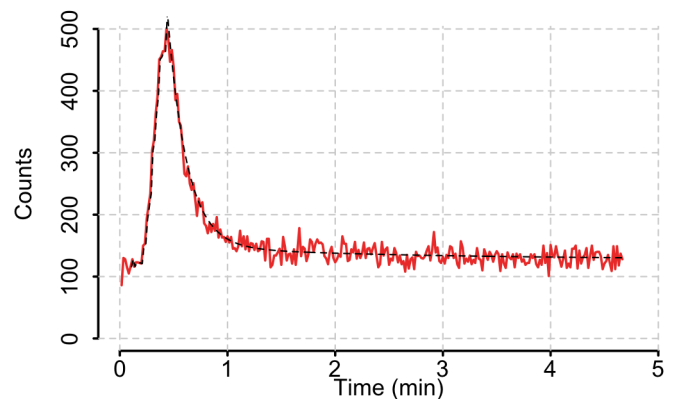
$[^{18}\text{F}]$ -fluorodeoxyglucose (FDG) in rat
45 MBq via femoral arteriovenous shunt
data shown with 3-exponential model fit



$[^{15}\text{O}]$ -water in man
600 MBq intravenous infusion
data shown with gamma function + 2-exp. fit



$[^{18}\text{F}]$ mGluR5 tracer in man
250 MBq intravenous bolus
data shown with 3-exponential model fit



$[^{18}\text{F}]$ mGluR5 tracer
(zoom on peak area of data shown to the left)

Raw data shown at native 1 second sampling interval, non-decay corrected; model fits from PMOD PKIN tool

For a copy of the example data shown here, please contact info@swisstrace.ch

Published examples: Alf et al., J Nucl Med (2013), 54:1-7; Zhang et al., JCBFM (2014), 34:1373-1380